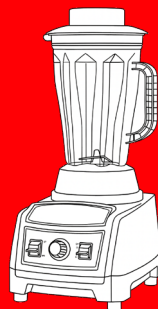


CONTENDER

STEP UP TO THE PLATE



CONTENDER FOOD BLENDER

VGB005 | VGB006 | VGB023

CONTENTS

1. INTRODUCTION	3
2. IMPORTANT SAFETY INSTRUCTIONS	3
3. OPERATION	5
4. CLEANING AND MAINTENANCE	9
5. DISCARDING & ENVIRONMENT	9
6. TROUBLESHOOTING	10
7. WIRING DIAGRAM	10
8. WARRANTY TERMS.....	11

I. INTRODUCTION

THANK YOU FOR PURCHASING THIS APPLIANCE. READ THIS ENTIRE MANUAL BEFORE CONNECTING THE APPLIANCE TO PREVENT DAMAGE DUE TO IMPROPER USE. PAY SPECIAL ATTENTION TO THE (SPECIAL) SAFETY INSTRUCTIONS. ALWAYS KEEP THESE INSTRUCTIONS WITH THE APPLIANCE EVEN IF YOU MOVE OR SELL IT. USERS MUST FULLY KNOW THE OPERATION AND SAFETY FEATURES OF THE APPLIANCE.

2. IMPORTANT SAFETY INSTRUCTIONS

YOUR SAFETY AND THE SAFETY OF OTHERS IS VERY IMPORTANT.

THERE ARE MANY IMPORTANT SAFETY MESSAGES IN THIS MANUAL AND ON YOUR APPLIANCE. ALWAYS READ AND OBEY ALL SAFETY MESSAGES. ALL SAFETY MESSAGES WILL ALERT YOU WHAT THE POTENTIAL HAZARD IS, TELL YOU HOW TO REDUCE THE CHANCE OF INJURY, AND LET YOU KNOW WHAT CAN HAPPEN IF THE INSTRUCTIONS ARE NOT FOLLOWED.



THIS IS A SAFETY ALERT SYMBOL. IT WILL ALERT YOU TO POTENTIAL PERSONAL OR PROPERTY SAFETY HAZARDS. OBEY ALL SAFETY MESSAGES TO AVOID ANY PROPERTY DAMAGE, PERSONAL INJURY, OR DEATH.



CAUTION

INDICATES A MODERATE HAZARDOUS SITUATION WHICH, IF NOT AVOIDED, COULD RESULT IN MINOR OR MODERATE INJURY.



WARNING

INDICATES A POTENTIALLY HAZARDOUS SITUATION WHICH, IF NOT AVOIDED, COULD RESULT IN SERIOUS INJURY OR DEATH.

INCORRECT OPERATION AND IMPROPER USE OF THE APPLIANCE CAN SERIOUSLY DAMAGE THE APPLIANCE AND INJURE USERS.

*THE APPLIANCE MAY ONLY BE USED FOR THE PURPOSE FOR WHICH IT WAS INTENDED AND DESIGNED. THE MANUFACTURER IS NOT LIABLE FOR ANY DAMAGE CAUSED BY INCORRECT OPERATION AND IMPROPER USE.

THIS APPLIANCE MUST BE EARTHED. IN THE EVENT OF AN ELECTRICAL SHORT CIRCUIT, EARTHING REDUCES THE RISK OF ELECTRICAL SHOCK BY PROVIDING AN ESCAPE WIRE FOR THE ELECTRICAL CURRENT. THIS APPLIANCE IS EQUIPPED WITH A CORD THAT HAS A EARTHING WIRE WITH A EARTHED PLUG. THE PLUG MUST BE PLUGGED INTO AN OUTLET THAT IS PROPERLY INSTALLED.

DUE TO POSSIBLE VARIATIONS IN LINE VOLTAGE (CAUSED BY OVERLOADING OF CIRCUITS), IT IS ADVISABLE TO INSTALL A SEPARATE FUSE CIRCUIT FROM THE METER PANEL. THIS WILL HELP TO ELIMINATE CURRENT FLUCTUATION WHICH MIGHT CAUSE MOTOR TROUBLE. THE SERIAL RATING PLATE INDICATES THE VOLTAGE AND FREQUENCY THE APPLIANCE IS DESIGNED FOR.



WARNING

IMPROPER USE OF THE EARTHED PLUG CAN RESULT IN A RISK OF ELECTRIC SHOCK. CONSULT A QUALIFIED ELECTRICIAN OR SERVICE AGENT IF THE EARTHING INSTRUCTIONS ARE NOT COMPLETELY UNDERSTOOD, OR IF DOUBT EXISTS AS TO WHETHER THE APPLIANCE IS PROPERLY GROUNDED. DO NOT SPLICE THE CORD. DO NOT UNDER ANY CIRCUMSTANCES CUT

OR REMOVE THE THIRD EARTH PRONG FROM THE POWER CORD. DO NOT USE UNGROUNDED (TWO PRONG) ADAPTER PLUGS WITH THIS APPLIANCE.



WARNING

KEEP THE APPLIANCE AND ELECTRICAL PLUG AWAY FROM WATER AND ANY OTHER LIQUIDS. IN THE UNLIKELY EVENT THAT THE APPLIANCE SHOULD FALL INTO WATER, IMMEDIATELY PULL THE PLUG OUT OF THE SOCKET AND HAVE THE APPLIANCE CHECKED BY A CERTIFIED TECHNICIAN. NOT FOLLOWING THESE INSTRUCTIONS COULD GIVE RISE TO LIFE-THREATENING SITUATIONS.

- NEVER TRY TO OPEN THE CASING OF THE APPLIANCES YOURSELF.
- DO NOT INSERT ANY OBJECTS IN THE CASING OF THE APPLIANCE.



WARNING

- DO NOT TOUCH THE PLUG WITH WET OR DAMP HANDS.
- REGULARLY CHECK THE PLUG AND CORD FOR ANY DAMAGE. SHOULD THE PLUG OR CORD BE DAMAGED HAVE IT/THEM REPAIRED BY A CERTIFIED REPAIR COMPANY.
- DO NOT USE THE APPLIANCE AFTER IT HAS FALLEN OR IS DAMAGED IN ANY OTHER WAY. HAVE IT CHECKED AND REPAIRED, IF NECESSARY, BY A CERTIFIED REPAIR COMPANY.

- DO NOT TRY TO REPAIR THE APPLIANCE YOURSELF. THIS COULD GIVE RISE TO LIFE-THREATENING SITUATIONS.
- MAKE SURE THE CORD DOES NOT COME IN CONTACT WITH SHARP OR HOT OBJECTS AND KEEP IT AWAY FROM OPEN FIRE. TO PULL THE PLUG OUT OF THE SOCKET, ALWAYS PULL ON THE PLUG AND NOT ON THE CORD.
- MAKE SURE THAT NO ONE CAN ACCIDENTALLY PULL THE CORD (OR EXTENSION CORD) LOOSE OR TRIP OVER THE CORD.
- ALWAYS KEEP AN EYE ON THE APPLIANCE WHEN IN USE.
- CHILDREN DO NOT UNDERSTAND THAT INCORRECT USE OF ELECTRICAL APPLIANCES CAN BE DANGEROUS. THEREFORE, NEVER LET CHILDREN USE THESE APPLIANCES WITHOUT SUPERVISION

SAVE THESE INSTRUCTIONS!



CAUTION

- ALWAYS PULL THE PLUG OUT OF THE SOCKET WHEN THE APPLIANCE IS NOT BEING USED AND ALWAYS BEFORE CLEANING.



WARNING

AS LONG AS THE PLUG IS IN THE SOCKET THE APPLIANCE IS CONNECTED TO THE POWER SOURCE.

- TURN OFF THE APPLIANCE BEFORE PULLING THE PLUG OUT OF THE SOCKET.
- NEVER CARRY THE APPLIANCE BY THE CORD.
- THIS APPLIANCE IS SOLELY USED FOR BLENDING FOOD.
- DO NOT USE ANY EXTRA DEVICES THAT ARE NOT SUPPLIED ALONG WITH THE APPLIANCE.
- ONLY CONNECT THE APPLIANCE TO AN EARTHED 220-240VAC ELECTRICAL SOCKET.
- DO NOT REMOVED THE GROUNDING PRONG FROM THE PLUG. IF IN DOUBT ABOUT THE GROUNDING OF THE HOME ELECTRICAL SYSTEM, IT IS YOUR RESPONSIBILITY AND OBLIGATION TO HAVE AN GROUNDED OUTLET IN ACCORDANCE WITH THE NATIONAL ELECTRICAL CODE.
- AVOID OVERLOADING.
- TURN OFF THE APPLIANCE AFTER USE BY REMOVING THE PLUG FROM THE SOCKET.
- ALWAYS REMOVE THE PLUG FROM THE SOCKET WHEN FILLING OR CLEANING THE APPLIANCE.
- THE ELECTRICAL INSTALLATION MUST SATISFY THE APPLIANCE NATIONAL AND LOCAL REGULATIONS.
- THIS APPLIANCE IS NOT INTENDED FOR USE BY PERSONS (INCLUDING CHILDREN) WITH REDUCED PHYSICAL, SENSORY OR MENTAL CAPABILITIES, OR LACK OF EXPERIENCE AND KNOWLEDGE, UNLESS THEY HAVE BEEN GIVEN SUPERVISION OR INSTRUCTION CONCERNING USE OF THE APPLIANCE BY A PERSON RESPONSIBLE FOR THEIR SAFETY.
- THIS APPLIANCE IS INTENDED TO BE USED IN HOUSEHOLD AND COMMERCIAL APPLICATIONS SUCH AS:
 - STAFF KITCHEN AREAS IN SHOPS, OFFICES AND OTHER WORKING ENVIRONMENTS;
 - FARM HOUSES;
 - BY CLIENTS IN HOTELS, MOTELS AND OTHER RESIDENTIAL TYPE ENVIRONMENTS;
 - BED AND BREAKFAST TYPE ENVIRONMENTS.
- THE JAR OF THE APPLIANCE IS ONLY TO BE USED WITH THE MAIN MACHINE PROVIDED.



WARNING

- THE WIRE CONNECTION MUST BE CARRIED OUT BY A SPECIALISED TECHNICIAN.
- THE MANUFACTURER WILL NOT BE HELD LIABLE FOR ANY DAMAGES RESULTING FROM INCORRECT OR IMPROPER INSTALLATION.
- CHECK THAT THE MAINS VOLTAGE CORRESPONDS TO THAT INDICATED ON THE RATING LABEL FIXED ON THE APPLIANCE.
- MEANS FOR DISCONNECTION MUST BE INCORPORATED IN THE FIXED WIRING IN ACCORDANCE WITH THE WIRING RULES.
- FOR CLASS I APPLIANCES, CHECK THAT THE POWER SUPPLY GUARANTEES ADEQUATE EARTHING.
- IF THE SUPPLY CORD IS DAMAGED, IT MUST BE REPLACED BY THE MANUFACTURER OR ITS SERVICE AGENT.
- CONNECT THE PLUG TO A SOCKET COMPLYING WITH CURRENT REGULATIONS, LOCATED IN AN ACCESSIBLE PLACE.



CAUTION

- BEFORE INSTALLING THE APPLIANCE, REMOVE ALL THE PACKING MATERIALS.



WARNING

- THIS APPLIANCE CAN BE USED BY CHILDREN AGED FROM 16 YEARS AND ABOVE AND PERSONS WITH REDUCED PHYSICAL, SENSORY, OR MENTAL CAPABILITIES OR LACK OF EXPERIENCE AND KNOWLEDGE IF THEY HAVE BEEN GIVEN SUPERVISION OR INSTRUCTION CONCERNING USE OF THE APPLIANCE IN A SAFE WAY AND UNDERSTAND THE HAZARDS INVOLVED. CHILDREN SHALL NOT PLAY WITH THE APPLIANCE. CLEANING AND USER MAINTENANCE SHALL NOT BE MADE BY CHILDREN WITHOUT SUPERVISION.
- THE SYMBOL ON THE PRODUCT OR ON ITS PACKAGING INDICATES THAT THIS PRODUCT MAY NOT BE TREATED AS HOUSEHOLD WASTE. INSTEAD, IT SHALL BE HANDED OVER TO THE APPLICABLE COLLECTION POINTS FOR THE RECYCLING OF ELECTRICAL AND ELECTRONIC EQUIPMENT. BY ENSURING THIS PRODUCT IS DISPOSED OF CORRECTLY, YOU WILL HELP PREVENT POTENTIAL NEGATIVE CONSEQUENCES FOR THE ENVIRONMENT AND HUMAN HEALTH, WHICH COULD OTHERWISE BE CAUSED BY INAPPROPRIATE WASTE HANDLING OF THIS PRODUCT. FOR MORE DETAILED INFORMATION ABOUT RECYCLING OF THIS PRODUCT, PLEASE CONTACT YOUR LOCAL CITY OFFICE, YOUR HOUSEHOLD WASTE DISPOSAL SERVICE, OR THE SHOP WHERE YOU PURCHASED THE PRODUCT.

2.1. SPECIAL SAFETY INSTRUCTIONS

- THE CUTTING BLADES IN THE JAR CAN CAUSE SEVERE INJURY. DO NOT REACH INTO THE JAR!
- MOVING PARTS WILL BECOME HOT WITH EXTENDED USE. DON'T TOUCH THE MOVING PARTS. RISK OF BURNS!
- BE CAREFUL WHEN BLENDING HOT LIQUIDS. ONLY BLEND HOT LIQUIDS AT THE LOWEST SPEED AND WITH THE LID FIRMLY IN PLACE. RISK OF BURNS BY ESCAPING STEAM AND SPLASHES!
- UNPLUG THE APPLIANCE FROM THE POWER OUTLET IF NOT IN USE.
- MAKE SURE THE MOTOR UNIT IS SWITCHED OFF BEFORE PLACING THE JAR ONTO THE MOTOR UNIT.

3. OPERATION

3.1. PREPARATIONS BEFORE USING FOR THE FIRST TIME

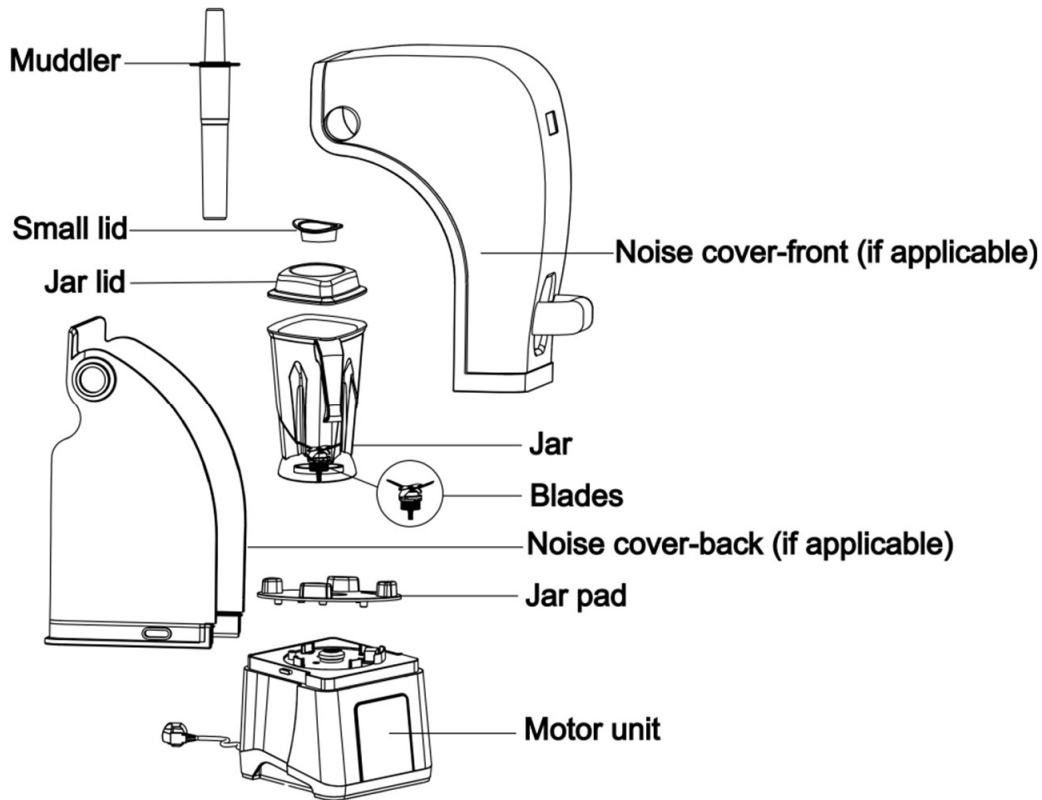
CONFIRM THE TYPE OF BLENDER YOU HAVE PURCHASED, THEN REFER TO APPROPRIATE OPERATION INSTRUCTIONS IN THIS MANUAL:

- MECHANICAL CONTROL BLENDER WITH PULSE SWITCH (VGBO05 & VGBO06)
- DIGITAL CONTROL BLENDER (VGBO23)

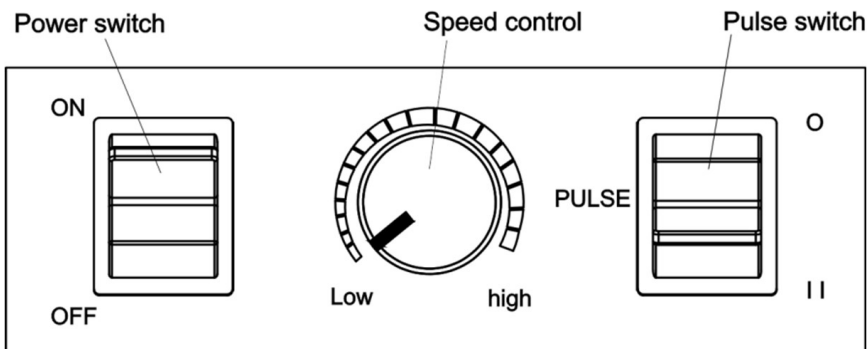
CHECK TO MAKE SURE THE APPLIANCE IS UNDAMAGED. IN CASE OF ANY DAMAGE, CONTACT YOUR SUPPLIER IMMEDIATELY AND DO NOT USE THE APPLIANCE.

- REMOVE ALL THE PACKING MATERIAL.
- CLEAN THE APPLIANCE WITH LUKEWARM WATER AND A SOFT CLOTH.
- PLACE THE APPLIANCE ON A LEVEL AND STEADY SURFACE.
- POSITION THE APPLIANCE IN A WAY THAT THE PLUG IS ALWAYS ACCESSIBLE.
- UNPLUG THE APPLIANCE FROM THE POWER OUTLET IF NOT IN USE.
- MAKE SURE THE MOTOR UNIT IS SWITCHED OFF BEFORE PLACING THE JAR ONTO THE MOTOR UNIT.

3.2. LIST OF COMPONENTS



3.3. CONTROL PANEL - VGB005 & VGB006



3.4. OPERATION OF VGB005 & VGB006

- CHECK IF THE MOTOR UNIT IS SWITCHED OFF.
- PLUG THE APPLIANCE INTO MAINS.
- PLACE THE INGREDIENTS IN THE JAR. CLOSE THE LID FIRMLY.
- PLACE THE JAR ONTO THE MOTOR UNIT CORRECTLY.
- CLOSE THE NOISE COVER CORRECTLY. (IF APPLICABLE)
- CHECK TO MAKE SURE THE SPEED CONTROL KNOB IS IN LOW-SPEED POSITION.
- SWITCH ON THE MOTOR UNIT.
- IN ORDER FOR LONGER SERVICE TIME OF THE MOTOR, DO NOT EXCEED 2 MINUTES WHEN RUNNING AT MAX POWER, THEN TURN OFF THE APPLIANCE FOR 2 MIN. DO NOT OVERLOADING.
- THE POWER SWITCH (LEFT BUTTON) ON THE MOTOR UNIT LETS THE APPLIANCE RUN CONTINUOUSLY AT THE VARIABLE SPEED DETERMINED SETTING OF THE SPEED CONTROL (CENTER KNOB).
- TURN THE SPEED KNOB CLOCKWISE FOR INCREASING THE SPEED AND COUNTER CLOCKWISE FOR DECREASING THE SPEED.
- THE PULSE SWITCH (RIGHT BUTTON) ON THE MOTOR UNIT LETS THE MOTOR RUN AT A FULL SPEED. THE MOTOR STOPS IF THE BUTTON IS RELEASED.
- SWITCH OFF THE MOTOR AND WAIT UNTIL THE MOTOR COMES TO A COMPLETE STOP BEFORE REMOVING THE JAR.
- THE MOTOR WILL AUTOMATICALLY SHUT DOWN IF THE JAR IS REMOVED.
- UNPLUG THE APPLIANCE FROM THE OUTLET WHEN NOT IN USE.

IMPORTANT NOTE: THIS APPLIANCE IS NOT SUITABLE FOR USE WITH FROZEN FOODS, ICE CUBES AND SOLID CHOCOLATE.

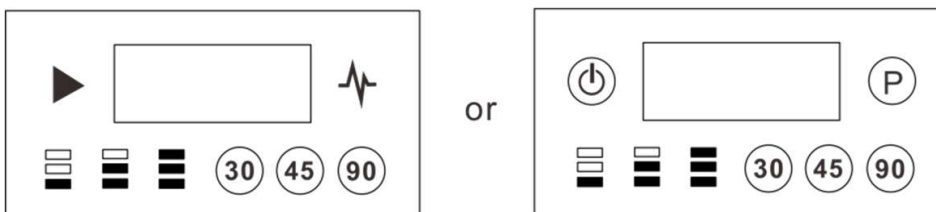


CAUTION

THE MOTOR WILL RE-START IMMEDIATELY IF THE JAR IS PLACED BACK ON THE MOTOR UNIT WITH THE MACHINE IS STILL AT SWITCH ON POSITION. THIS WILL DAMAGE THE CLUTCH ON THE MOTOR UNIT AND ON THE JAR. ONLY PLACE THE JAR ONTO THE MOTOR UNIT WHEN IT IS SWITCHED OFF.

- TURN THE TIMER KNOB TO DESIRED POSITION. REFER TO BELOW TABLE.

3.5. CONTROL PANEL - VGB023



3.6. OPERATION OF VGB023

*THE SECONDS OF TIMER MIGHT BE VARIED ON DIFFERENT MODEL (FOR EXAMPLE, IT MIGHT BE 30 90 180 INSTEAD). THE SWITCH 30 MIGHT BE OF WAVE MODE OR REGULAR TIMER MODE, PLEASE REFER TO ACTUAL PRODUCT YOU HAVE PURCHASED.

- CHECK IF ALL THE PACKING MATERIAL ARE REMOVED.
- PLUG THE APPLIANCE INTO MAINS.
- PLACE THE INGREDIENTS IN THE JAR. CLOSE THE LID FIRMLY.

- PLACE THE JAR ONTO THE MOTOR UNIT CORRECTLY.
- CLOSE THE SOUNDPROOF COVER CORRECTLY.(IF APPLICABLE)
- THE SYMBOL “▶” (OR “⏻”) WILL BE LIGHTED (POWER-ON MODE).
- TOUCH “▶”(OR “⏻”) TO ENTER STAND-BY MODE (ALL THE SWITCHES WILL BE LIGHTED UP).
- REFER TO BELOW TABLE FOR OPERATIONS OF FUNCTION SWITCHES.



OR



POWER SWITCH. WILL BE LIGHTED UP ONCE THE APPLIANCE IS CONNECTED TO MAINS (POWER-ON MODE). AT POWER-ON MODE, TOUCH TO ENTER STAND-BY MODE, TOUCH AGAIN TO RUN AT MEDIUM SPEED LEVEL FOR 20S. WHILE THE APPLIANCE IS WORKING, TOUCH THIS SWITCH TO TERMINATE WORKING AND TURN TO POWER-ON MODE.



SPEED CONTROL SWITCH. TOUCH TO RUN AT LOW SPEED - LEVEL 10.



SPEED CONTROL SWITCH. TOUCH TO RUN AT MEDIUM SPEED - LEVEL 20.



SPEED CONTROL SWITCH. TOUCH TO RUN AT HIGH SPEED - LEVEL 35.

30

WAVE
MODE

WAVE MODE (IF APPLICABLE). TOUCH TO BLEND FOR 30S AT AUTO WAVE MODE (SHIFTING BETWEEN LOW & HIGH SPEED IN TURN). WHEN THIS FUNCTION IS ACTIVATED, TIMER AND SPEED CAN'T BE ADJUSTED. TOUCH “▶” (OR “⏻”) TO TERMINATE WORKING OR WAIT FOR COUNTING DOWN 30S TO STOP.

30

TIMER
MODE

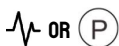
TIMER (30S, IF APPLICABLE). TOUCH TO SET 30S COUNTING DOWN TIME, THEN TOUCH SPEED CONTROL SWITCH TO START WORKING, WILL STOP AFTER 30S, OR TERMINATE WORKING BY TOUCHING POWER SWITCH. WHILE WORKING, SPEED AND TIME CAN BE ADJUSTED.

45

TIMER (45S). TOUCH TO SET 45S COUNTING DOWN TIME, THEN TOUCH SPEED CONTROL SWITCH TO START WORKING, WILL STOP AFTER 45S, OR TERMINATE WORKING BY TOUCHING POWER SWITCH. WHILE WORKING, SPEED AND TIME CAN BE ADJUSTED.

90

TIMER (90S). TOUCH TO SET 90S COUNTING DOWN TIME, THEN TOUCH SPEED CONTROL SWITCH TO START WORKING, WILL STOP AFTER 90S, OR TERMINATE WORKING BY TOUCHING POWER SWITCH. WHILE WORKING, SPEED AND TIME CAN BE ADJUSTED.



PULSE SWITCH, PRESS AND HOLD TO BLEND AT FULL SPEED, RELEASE TO STOP.

- IN ORDER FOR LONGER SERVICE TIME OF THE MOTOR, DO NOT EXCEED 2 MINUTES WHEN RUNNING AT MAX POWER, THEN TURN OFF THE APPLIANCE FOR 2 MIN. DO NOT OVERLOADING.
- SWITCH OFF THE MOTOR AND WAIT UNTIL THE MOTOR COMES TO A COMPLETE STOP BEFORE REMOVING THE JAR.
- IF THE APPLIANCE IS EQUIPPED WITH MAGNET SWITCH ON THE NOISE COVER, MOTOR WILL AUTOMATICALLY SHUT DOWN WHEN THE COVER IS OPENED.
- UNPLUG THE APPLIANCE FROM THE OUTLET WHEN NOT IN USE.

4. CLEANING AND MAINTENANCE

- ALWAYS REMOVE THE PLUG FROM MAINS BEFORE CLEANING THE APPLIANCE.
- BEWARE: NEVER IMMERSE THE APPLIANCE IN WATER OR ANY OTHER LIQUID!
- CLEAN THE OUTSIDE OF THE APPLIANCE WITH A DAMP CLOTH (WATER AND A MILD DETERGENT).
- NEVER USE AGGRESSIVE CLEANING AGENTS AND/OR ABRASIVES. DO NOT USE ANY SHARP AND/OR POINTED OBJECTS. DO NOT USE PETROL OR SOLVENTS! CLEAN WITH A DAMP CLOTH AND DETERGENT IF NECESSARY. DO NOT USE ABRASIVE MATERIALS.
- NEVER IMMERSE THE JAR IN WATER OR ANY OTHER LIQUID! THE JAR MUST BE CLEANED, RINSED AND DRIED IMMEDIATELY AFTER EACH USE.

4.1. MIXING CUP CLEANING PROCEDURE

- POUR WATER AND A MILD DETERGENT INTO THE JAR.
- PLACE THE LID ONTO THE JAR.
- PLACE THE JAR ON TO THE MOTOR UNIT.
- SWITCH THE MOTOR UNIT ON AT FULL SPEED FOR 10-20 SECONDS.
- SWITCH OFF THE MOTOR UNIT.
- REMOVE THE JAR FROM THE MOTOR UNIT.
- RINSE THE JAR THOROUGHLY WITH CLEAN WATER.
- DRY THE IN-SIDE AND OUTSIDE OF THE JAR.
- STORE THE JAR UPSIDE DOWN.
- THE JAR IS NOT DISHWASHER PROOF!
- THE UNDERSIDE OF THE JAR MAY NEVER COME INTO CONTACT WITH ANY LIQUID!

5. DISCARDING & ENVIRONMENT

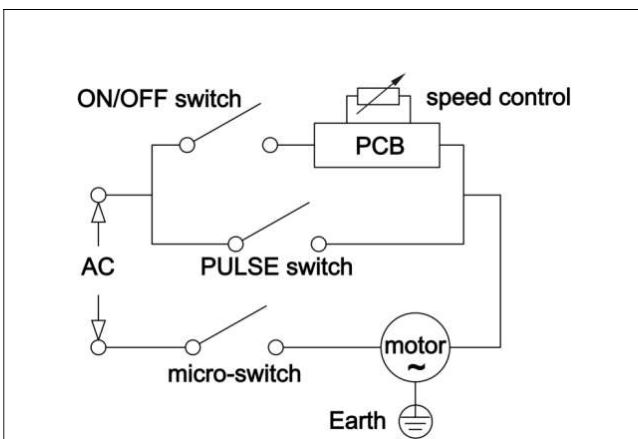
AT THE END OF THE LIFE OF THE APPLIANCE, PLEASE DISPOSE OF THE APPLIANCE ACCORDING TO THE REGULATIONS AND GUIDELINES APPLICABLE AT THE TIME. THROW PACKING MATERIALS LIKE PLASTIC AND BOXES IN THE APPROPRIATE BINS.

6. TROUBLESHOOTING

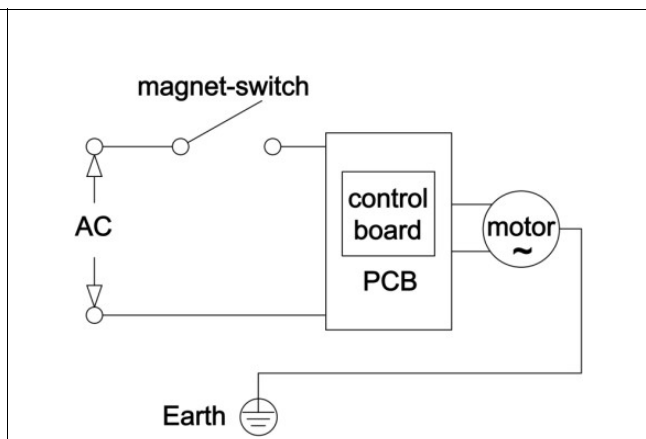
PLEASE READ THE TABLE BELOW BEFORE CALLING YOUR AUTHORSIED SERVICE PROVIDER.

ISSUE	CAUSES	SOLUTIONS
APPLIANCE CANNOT BE SWITCHED ON.	THE APPLIANCE IS EQUIPPED WITH MICROSWITCH ON THE MOTOR UNIT, WHEN THE MIXING JAR IS NOT POSITIONED CORRECTLY, THE APPLIANCE CANNOT BE SWITCHED ON.	PLACE THE MIXING JAR ONTO THE MOTOR UNIT CORRECTLY.
	THE APPLIANCE IS EQUIPPED WITH A MAGNET SWITCH ON NOISE COVER, IF THE NOISE COVER IS NOT CLOSED CORRECTLY, THE APPLIANCE CANNOT BE SWITCHED ON.	CLOSE THE NOISE COVER CORRECTLY.
	ON/OFF SWITCH HAS NOT BEEN OPERATED	ACTIVATE THE APPLIANCE WITH THE ON/OFF SWITCH ON THE CONTROL PANEL.
	THE TIMER IS IN "0" POSITION.	TURN THE TIMER TO "ON" POSITION.
APPLIANCE STOPS DURING OPERATION	MOTOR PROTECTION MECHANISM FOR OVER-HEAT HAS BEEN ACTIVATED.	SWITCH THE APPLIANCE OFF AND PULL THE PLUG OUT. LET THE APPLIANCE COOL OFF FOR APPROX. 20 MINUTES, AND RESTART THE APPLIANCE AFTERWARDS.
	THE NOISE COVER IS OPENED DURING OPERATION.	CHECK TO SEE IF THE NOISE COVER IS CLOSED PROPERLY. CLOSE IT IF IT IS OPENED.

7. WIRING DIAGRAM



VGBO05 & VGBO06 MECHANICAL CONTROL BLENDER



VGBO23 DIGITAL CONTROL BLENDER

8. WARRANTY TERMS

DOCUMENTS WITHOUT SALES DATE, FACTORY AND SELLER COMPANY APPROVAL ARE INVALID. IN ORDER TO BENEFIT FROM THE WARRANTY, THE SALES (INVOICE, ASSEMBLY REPORT, ETC.) DOCUMENT MUST BE SHOWN.

- ALL CONTENDER PRODUCTS COME WITH A 24 MONTHS PARTS ONLY WARRANTY.
- THE DEVICE IS GUARANTEED AGAINST MALFUNCTIONS CAUSED BY MATERIAL AND WORKMANSHIP DEFECTS IF IT IS ASSEMBLED AND USED AS DESCRIBED IN THE ASSEMBLY, USE AND MAINTENANCE MANUAL.
- THE MANUFACTURER DETERMINES THE DETECTION, REPAIR METHOD AND LOCATION OF THE MALFUNCTIONS COVERED BY THE WARRANTY.
- WARRANTY COVERAGE BELONGS ONLY TO THE GUARANTEED DEVICE IF THE INSTALLATION, USE AND MAINTENANCE MANUAL AND WARRANTY CONDITIONS ARE COMPLIED WITH, NO RIGHTS OR COMPENSATION CAN BE CLAIMED UNDER ANY OTHER NAME.
- THE WARRANTY IS VOID IF THE INFORMATION ON THE WARRANTY CERTIFICATE OR ON THE WARRANTED DEVICE INDICATING THE TYPE, MODEL AND SERIAL NUMBERS OF THE DEVICE IS SCRATCHED, ERASED OR MODIFIED.
- THE WARRANTY ONLY INCLUDES MAINTENANCE AND REPAIR AGAINST DEFECTS IN MATERIALS AND WORKMANSHIP THAT MAY OCCUR WITHIN THE VALID PERIODS. FAILURES AND PARTS WITHIN THE SCOPE OF THE WARRANTY ARE REPAIRED AND REPLACED FREE OF CHARGE.
- DURING THE WARRANTY PERIOD, ONLY SERVICE PERSONNEL AUTHORISED BY THE MANUFACTURER CAN INTERVENE IN MALFUNCTIONS. INTERVENTION OF UNAUTHORISED PERSONS MAY EXCLUDE THE DEVICE FROM THE WARRANTY.
- INSTALLATION MUST BE DONE AS SPECIFIED IN THE INSTRUCTIONS. IN CASE OF CHANGING THE ADDRESS OF USE OF THE DEVICE, IT MUST BE NOTIFIED IN ACCORDANCE WITH THE RELOCATION AND ASSEMBLY INSTRUCTIONS.
- IN CASE OF ANY MALFUNCTION DURING USE, THE AUTHORISED SERVICE SHOULD BE NOTIFIED.
- ANY DAMAGES AND MALFUNCTIONS THAT MAY OCCUR DURING THE SHIPMENT PROCESS SUCH AS LOADING AND UNLOADING OUTSIDE THE RESPONSIBILITY OF THE MANUFACTURER WILL BE TREATED OUT OF WARRANTY. THE ELIMINATION OF DAMAGES AND MALFUNCTIONS CAUSED BY EXTERNAL FACTORS DURING THE USE OF THE DEVICE IS OUT OF WARRANTY.

IN THE BUILDING WHERE THE DEVICE WILL BE CONNECTED, THE INSTALLATION MUST BE IN ACCORDANCE WITH THE REGULATIONS, AND ALL NECESSARY MEASURES MUST BE TAKEN TO ENSURE THE SAFETY OF LIFE AND PROPERTY.

IF THE ABOVE IS NOT OBSERVED OUR COMPANY WILL NOT ACCEPT RESPONSIBILITY.

VGBO05 · CONTENDER 2.7 LITRE COMMERCIAL BAR BLENDE

VGBO06 · CONTENDER 3.8 LITRE COMMERCIAL BAR BLENDER WITH SOUND COVER

VGBO23 · CONTENDER 2.5 LITRE COMMERCIAL HEAVY DUTY DIGITAL BLENDER



STEP UP TO THE PLATE