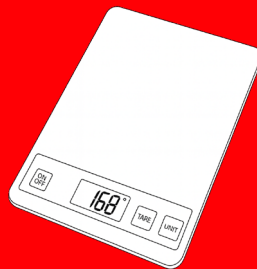


# CONTENDER

STEP UP TO THE PLATE



**CONTENDER 15KG ELECTRONIC KITCHEN SCALE**

ACC008

# CONTENTS

1. INTRODUCTION.....	3
2. WARNINGS .....	3
3. INITIAL USE .....	3
4. SPECIFICATION .....	3
5. OPERATION .....	4
6. TIPS FOR USAGE.....	5
7. CLEANING.....	5
8. WARRANTY TERMS.....	6



# 1. INTRODUCTION

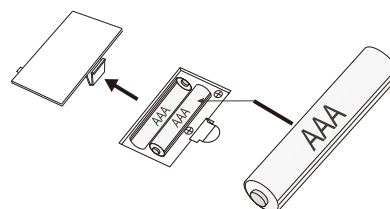
THANK YOU FOR CHOOSING OUR PRODUCT AND TRUSTING IN US. OUR DEVICES ARE USED IN MANY CITIES AT HOME AND ABROAD. OUR PRODUCT IS MANUFACTURED ACCORDING TO INTERNATIONAL STANDARDS. WE STRONGLY REMIND YOU TO READ THE USER MANUAL AND HAVE IT READ TO GET THE DEVICE'S EFFICIENCY TO YOUR EXPECTATIONS AND USE IT FOR A LONG TIME. WE ASK YOU TO HEED THE FOLLOWING WARNINGS BEFORE CALLING OUR SERVICE.

# 2. WARNINGS

PLEASE READ THE MANUAL AND OPERATING INSTRUCTIONS CAREFULLY BEFORE INSTALLING THE BATTERIES AND USING THE SCALES. THIS IS A SENSITIVE PIECE OF EQUIPMENT AND IT IS IMPORTANT THAT IT IS USED CORRECTLY.

# 3. INITIAL USE

THIS APPLIANCE WORKS WITH 2 PIECES 1.5 V AAA BATTERY. FOR THE FIRST TIME USE, PLEASE OPEN THE BATTERY COMPARTMENT AND INSTALL THE BATTERIES UNDER CORRECT POSITIVE AND NEGATIVE PLATE.



# 4. SPECIFICATION

ACCO08

SENSOR TOUCH KEYS FOR: UNIT/ON (⏻)/TARE

MAXIMUM WEIGHT: 15KG, MINIMUM WEIGHT: 5G

DIVISION: IG

BATTERY INCLUDED: AAA 1.5VX2

UNITS OF MEASUREMENT: G / OZ / LB / KG

AUTO ZERO AND AUTO OFF (1 MINUTE)

LOW BATTERY INDICATION:  $\downarrow$  (REPLACE BATTERY)


OVERLOAD INDICATION:  $\square \downarrow$  (NEVER PLACE MORE THAN 15KG ON THE SCALE)

TURN ON: TOUCH BUTTON  $\uparrow$  TARE TO POWER ON THE SCALE.

AUTO OFF: THE SCALE AUTOMATICALLY POWERS OFF AFTER 1 MINUTE OF INACTIVITY

MANUAL OFF : HOLD BUTTON  $\uparrow$  TARE FOR 2 SECONDS TO POWER OFF.

# 5. OPERATION

- 1) TOUCH THE BUTTON “” TO SWITCH THE SCALE ON (WEIGHING MODE).
- 2) PROGRAM IN DESIRED MEASUREMENT UNIT BY PRESSING “UNIT” BUTTON.
- 3) PLACE WEIGHING ITEM ON THE PLATFORM AND WEIGH. IF YOU NEED TO KEEP ADDING ADDITIONAL INGREDIENTS ON THE PLATFORM, TOUCH THE BUTTON “TARE”, THE SCALE ONCE AGAIN SHOWS “0”, AFTER ADDING THE INGREDIENT, IT JUST SHOWS THE WEIGHT OF THE ADDITIONAL INGREDIENTS AND WILL NOT TAKE ACCOUNT OF THE WEIGHT OF THE INITIAL ITEM PLACED ON THE PLATFORM.
- 4) TAKE OFF ALL THE WEIGHING ITEMS, IT INDICATES THE ACTUAL NEGATIVE WEIGHT, PRESS “TARE” TO RETURN TO ZERO.
- 5) FOR LIQUIDS, FLOUR OR ANYTHING NEEDING A CONTAINER OR BOWL BEFORE YOU MEASURE IT, PLACE A SUITABLE CONTAINER ON THE PLATFORM, TOUCH THE KEY “TARE”, THE SCALE ONCE AGAIN SHOWS “0”, PLACE THE ITEM(S) TO BE WEIGHED INTO THE CONTAINER.

## 5.1. ADDING & WEIGHING (TARE FUNCTION)

YOU CAN REPEATEDLY SET THE SCALE BACK TO “0” IN ORDER TO WEIGH ADDITIONAL PARTIAL QUANTITIES.

- 1) FOR THIS, TOUCH THE KEY “TARE” ONCE. IT SHOW A WEIGHT OF “0” AGAIN.
- 2) PLACE THE ADDITIONAL ITEM(S) TO BE WEIGHED INTO THE PLATFORM OR CONTAINER, THE WEIGHT OF THE NEWLY ADDED ITEM(S) IS SHOWN.

**NOTE:** WITH REMOVAL OF THE BOWL OR INGREDIENTS FROM THE SCALES, AND ON PRESSING THE BUTTON “TARE”, “0” IS ONCE AGAIN INDICATED ON THE RIGHT IN THE DISPLAY.



### WARNING

NEVER PLACE MORE THAN 15KG OF OBJECTS ON THE SCALE AS THIS MAY DAMAGE THE PRODUCT AND RENDER THE WARRANTY NULL AND VOID.

## 5.2. REMOVING WEIGHED ITEMS

- 1) REMOVE THE DESIRED AMOUNT OF ITEM. THE WEIGHT VALUE OF THE REMOVED ITEM APPEARS IN THE DISPLAY AS A NEGATIVE VALUE.
- 2) PRESS THE BUTTON “TARE” ONCE, THE SCALE INDICATE A WEIGHT OF “0” AGAIN.

## 5.3. SWITCHING THE WEIGHING FUNCTION OFF

IF YOU DO NOT WEIGH ANYTHING FOR 1 MINUTE, THE SCALE WILL AUTOMATICALLY TURN OFF.

## 6. TIPS FOR USAGE

- ENSURE THE SCALE IS ON A FLAT, EVEN AND FIRM SURFACE.
- THIS SCALE IS NOT WATERPROOF. DO NOT EXPOSE TO MOISTURE.
- CLEAN THE SCALE WITH A SLIGHTLY DAMP CLOTH. DO NOT USE ANY CHEMICAL/ABRASIVE CLEANING AGENTS TO CLEAN THE SCALE.
- PLEASE REMOVE THE BATTERY IF THE SCALE IS NOT TO BEING USED FOR A LONG TIME.
- DO NOT DROP IT OR JUMP ON IT. IT IS A PRECISION INSTRUMENT. TREAT YOUR SCALE WITH CARE.

## 7. CLEANING

- WIPE CLEAN USING WARM SOAPY WATER TOGETHER WITH A LIGHT DISINFECTANT TO ENSURE THE UNIT IS KEPT HYGIENIC.
- NEVER PLACE UNDER RUNNING WATER OR SUBMERGE IN WATER.
- DO NOT USE ANY ABRASIVE MATERIAL OR CLEANING FLUID. THIS WILL DAMAGE THE UNIT AND THE UNIT WILL NO LONGER BE ACCURATE.
- PLACING IN A DISHWASHER OR SUBMERGING WILL RENDER THE WARRANTY NULL AND VOID.



## 8. WARRANTY TERMS

- DOCUMENTS WITHOUT SALES DATE, FACTORY AND SELLER COMPANY APPROVAL ARE INVALID. IN ORDER TO BENEFIT FROM THE WARRANTY, THE SALES (INVOICE, ASSEMBLY REPORT, ETC.) DOCUMENT MUST BE SHOWN.
- ALL CONTENDER PRODUCTS COME WITH A 24 MONTHS PARTS ONLY WARRANTY.
- THE DEVICE IS GUARANTEED AGAINST MALFUNCTIONS CAUSED BY MATERIAL AND WORKMANSHIP DEFECTS IF IT IS ASSEMBLED AND USED AS DESCRIBED IN THE ASSEMBLY, USE AND MAINTENANCE MANUAL.
- THE MANUFACTURER DETERMINES THE DETECTION, REPAIR METHOD AND LOCATION OF THE MALFUNCTIONS COVERED BY THE WARRANTY.
- WARRANTY COVERAGE BELONGS ONLY TO THE GUARANTEED DEVICE IF THE INSTALLATION, USE AND MAINTENANCE MANUAL AND WARRANTY CONDITIONS ARE COMPLIED WITH, NO RIGHTS OR COMPENSATION CAN BE CLAIMED UNDER ANY OTHER NAME.
- THE WARRANTY IS VOID IF THE INFORMATION ON THE WARRANTY CERTIFICATE OR ON THE WARRANTED DEVICE INDICATING THE TYPE, MODEL AND SERIAL NUMBERS OF THE DEVICE IS SCRATCHED, ERASED OR MODIFIED.
- THE WARRANTY ONLY INCLUDES MAINTENANCE AND REPAIR AGAINST DEFECTS IN MATERIALS AND WORKMANSHIP THAT MAY OCCUR WITHIN THE VALID PERIODS. FAILURES AND PARTS WITHIN THE SCOPE OF THE WARRANTY ARE REPAIRED AND REPLACED FREE OF CHARGE.
- DURING THE WARRANTY PERIOD, ONLY SERVICE PERSONNEL AUTHORISED BY THE MANUFACTURER CAN INTERVENE IN MALFUNCTIONS. INTERVENTION OF UNAUTHORISED PERSONS MAY EXCLUDE THE DEVICE FROM THE WARRANTY.
- INSTALLATION MUST BE DONE AS SPECIFIED IN THE INSTRUCTIONS. IN CASE OF CHANGING THE ADDRESS OF USE OF THE DEVICE, IT MUST BE NOTIFIED IN ACCORDANCE WITH THE RELOCATION AND ASSEMBLY INSTRUCTIONS.
- IN CASE OF ANY MALFUNCTION DURING USE, THE AUTHORISED SERVICE SHOULD BE NOTIFIED.
- ANY DAMAGES AND MALFUNCTIONS THAT MAY OCCUR DURING THE SHIPMENT PROCESS SUCH AS LOADING AND UNLOADING OUTSIDE THE RESPONSIBILITY OF THE MANUFACTURER WILL BE TREATED OUT OF WARRANTY. THE ELIMINATION OF DAMAGES AND MALFUNCTIONS CAUSED BY EXTERNAL FACTORS DURING THE USE OF THE DEVICE IS OUT OF WARRANTY.

**IN THE BUILDING WHERE THE DEVICE WILL BE CONNECTED, THE INSTALLATION MUST BE IN ACCORDANCE WITH THE REGULATIONS, AND ALL NECESSARY MEASURES MUST BE TAKEN TO ENSURE THE SAFETY OF LIFE AND PROPERTY.**

**IF THE ABOVE IS NOT OBSERVED OUR COMPANY WILL NOT ACCEPT RESPONSIBILITY.**



ACCO08 · CONTENDER 15KG ELECTRONIC KITCHEN SCALE



**STEP UP TO THE PLATE**