

CONTENDER

STEP UP TO THE PLATE



CONTENDER PASS-THROUGH HOOD DISHWASHER

DMH016 | DMH017

CONTENTS

A. GENERAL INFORMATION	2
A1. TECHNICAL INFORMATION	3
A2. TRANSPORTATION	3
A3. UNPACKING	4
B. INSTALLATION	4
C. SAFETY INSTRUCTIONS	4
D. OPERATION	5
E. CLEANING & MAINTENANCE	6
F. TROUBLESHOOTING	7
G. FREQUENTLY ASKED QUESTIONS	7
H. SPARE PART LIST- EXPLODING DRAWING	8
I. ELECTRIC CIRCUIT SCHEMA	14

A. GENERAL INFORMATION

BEFORE INSTALLING THE APPLIANCE, PLEASE READ THE MANUAL ESPECIALLY THE INSTALLATION, OPERATION AND MAINTENANCE INSTRUCTIONS CAREFULLY. WRONG INSTALLATION, PART CHANGING MAY DAMAGE THE PRODUCT, MAY CAUSE INJURY ON PEOPLE AND MAY INVALIDATE THE WARRANTY.

THIS ITEM IS HEAVY AND MUST ONLY BE MOVED WITH MECHANICAL AIDS.

BEFORE INSTALLING THE PRODUCT INSPECT THE DISHWASHER FOR ANY DAMAGE AND REPORT IMMEDIATELY TO THE SUPPLIER.

ECATERING WILL NOT BE HELD RESPONSIBLE FOR INTENTIONAL DAMAGE TO THE APPLIANCE, NEGLIGENCE, NOT FOLLOWING INSTRUCTIONS (MISUSE) AND REGULATIONS, INCORRECT INSTALLATION. INCORRECT INSTALLATION AND OPERATION OF THE APPLIANCE MAY INVALIDATE THE WARRANTY.

1. THIS INSTRUCTION MANUAL SHOULD BE KEPT IN A SAFE PLACE FOR FUTURE REFERENCE.
2. INSTALLATION SHOULD BE MADE BY A QUALIFIED ENGINEER WHO IS A CERTIFIED ELECTRICIAN. ECATERING STRONGLY RECOMMEND CORRECT INSTALLATION BY A QUALIFIED ENGINEER TO BE SURE TO PROTECT THE WARRANTY.
3. THIS APPLIANCE HAS TO BE USED BY A COMPETENT PERSON.
4. PLEASE TURN OFF THE APPLIANCE IMMEDIATELY IN THE EVENT OF MALFUNCTION OR FAILURE. THE APPLIANCE SHOULD BE REPAIRED ONLY BY AUTHORISED SERVICE PERSONNEL. PLEASE USE ONLY ORIGINAL SPARE PARTS TO ENSURE THE MAXIMUM EFFECTIVENESS OF THE WASHER.

AI. TECHNICAL INFORMATION

*THE PROFESSIONAL HOOD TYPE DISHWASHER, THAT PROVIDES HIGH EFFICIENCY HAS BEEN DESIGNED TO BE USED IN INDUSTRIAL KITCHENS.

PRODUCT CODE	DMHO16	DMHO17
CAPACITY (PLATE/ HOUR)	1000	1000
WATER CONSUMPTION (LT/PIECE.)	2,5	2,5
TOTAL POWER (KW)	5.6	9
MOTOR POWER (KW)	0,55	0,55
OPERATING VOLTAGE (V)	220-230	415/380
WATER PRESSURE (BAR)	2-4	2-4
TANK HEATING POWER (KW)	2.5	2.5
RINSING TANK POWER (KW)	5	6
CABLE (MM ²)	3 X 4	5 X 4
FUSE (A)	32	32
PROGRAM NUMBER (TIME)	4	4
DETERGENT PUMP	✓	✓
RINSE PUMP	✓	✓
DRAINAGE PUMP	✓	✓
DIMENSIONS (MM)	696 X 765 X 1485	696 X 765 X 1485
WEIGHT (KG)	112	112
PACKAGING DIMENSIONS (MM)	720 X 750 X 1610	720 X 750 X 1610





A2. TRANSPORTATION

THIS APPLIANCE CAN NOT BE MOVED BY HAND FROM AREA TO AREA. IT MUST BE MOVED USING THE APPROPRIATE MECHANICAL EQUIPMENT.

A3. UNPACKING

PLEASE UNPACK THE APPLIANCE USING CORRECT PROTECTED BLADE PRODUCTS, BE SURE YOU HAVE BEEN SHOWN HOW TO USE BLADED PRODUCTS SAFELY. DISPOSE OF PACKAGING APPROPRIATELY USING THE LOCAL RECYCLING FACILITIES AVAILABLE TO YOU. PARTS WHICH COME IN CONTACT WITH FOOD ARE PRODUCED IN STAINLESS STEEL. ALL PLASTIC PARTS ARE MARKED BY MATERIAL'S SYMBOL. PLEASE CHECK THAT ALL THE PARTS OF APPLIANCE ARE INCLUDED AND THE PRODUCT IS HAS NOT BEEN DAMAGED DURING THE SHIPPING.









B. INSTALLATION

-  PLEASE PLACE THE PRODUCT ON LEVEL AND STURDY GROUND, PLEASE TAKE NECESSARY STEPS TO ENSURE THE APPLIANCE IS LEVEL AND THERE IS NO POSSIBILITY OF OVERTURNING.
-  THE TECHNICIAN WHO IS TO INSTALL AND SERVICE THE APPLIANCE MUST BE A QUALIFIED ELECTRIAN AND BE ABLE TO SUPPLY A CERTIFIED CERTIFICATE OF INSTALLATION.
-  CONNECTION TO ELECTRIC POWER SUPPLY MUST BE COMPLETED BY AN AUTHORISED PERSON.
-  PLEASE BE SURE THAT THE VOLTAGE CONNECTED TO APPLIANCE MUST BE EQUAL WITH THE VOLTAGE WHICH IS ON THE APPLIANCE'S LABEL.



THIS APPLIANCE MUST BE CONNECTED TO AN EARTHED ELECTRICAL SUPPLY. THE MAIN FUSE CONNECTION MUST BE TESTED TO ENSURE SUITABLE ELCTRICAL SUPPLY IS AVAILABLE IN THE BUIDLING AND THAT CAPACITY FOR THE WASHER IS AVAILABLE.

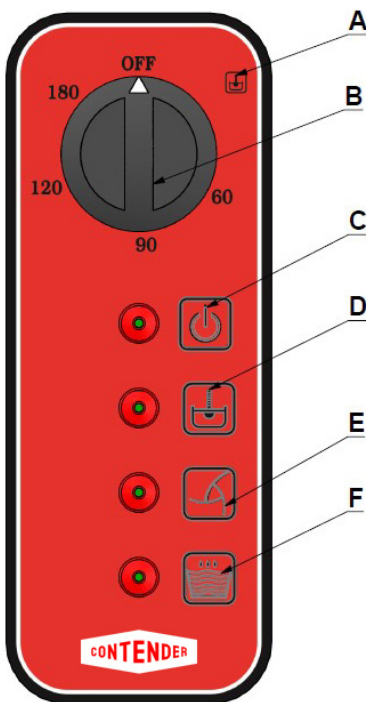
C. SAFETY INSTRUCTIONS

-  DO NOT USE THE APPLIANCE IN INSUFFICIENT LIGHTED PLACE.
-  DO NOT TOUCH THE MOVING ATTACHMENTS WHILE THE APPLIANCE OPERATES.
-  DO NOT INSTALL THE APPLIANCE IN THE PRESENCE OF FLAMMABLE OR EXPLOSIVE MATERIALS.
-  DO NOT USE WITH THE LOADING DOOR OPEN.
-  DO NOT LOAD MORE THAN APPLIANCE'S CAPACITY.
-  DO NOT ATTEMPT TO USE THE APPLIANCE OR LOAD THE DETEGENT AND RINSE LIQUIDS WITHOUT SUITABLE PROTECTIVE WEAR, (I.E. GLOVES, SAFETY GLASSES)
-  BECAUSE OF ANY REASON IF THERE IS A FIRE OR FLAME FLARE WHERE THE APPLIANCE IS USED,TURN OFF ALL GAS VALVES AND ELECTRIC CONTACTOR SWITCH QUICKLY AND USE FIRE EXTINGUISHER. NEVER USE WATER TO EXTINGUISH THE FIRE.
-  NEVER OVERRIDE SAFETY SWITCHES

- ⚠ ALL THE DAMAGES BECAUSE OF NOT HAVING EARTHING CONNECTION WILL NOT BE ON WARRANTY.
- ⚠ DO NOT WASH THE DECORATED DISHES. PREVENT SILVER WARE TO COME INTO CONTACT WITH THE OTHER METALS.
- ⚠ THE APPLIANCE MUST BE OPERATED UNDER THE CHIMNEY HOOD. OTHERWISE WHILE THE APPLIANCE IS OPERATING OR THE WATER VAPOR THAT COMES FROM OTHER APPLIANCES THAT WORKS IN THE AREA MAY CAUSE MOIST AND THE MOIST MAY DAMAGE APPLIANCE'S ELECTRICAL AND MECHANICAL PARTS. THE RELATIVE HUMIDITY MUSTN'T BE MORE THAN %65 WHERE THE APPLIANCE OPERATES.

D. OPERATION

CONTROL PANEL;



- A: WATER INLET
- B: PROGRAM OPTION
- C: ON LAMP
- D: WATER HEATED LAMP
- E: WASHING LAMP
- F: WATER INLET-RINSING LAMP

OPERATING;

- CHANGE THE WATER THAT IS IN WATER TANK AT LEAST ONCE A DAY.
- BEFORE PUTTING THE DISHES IN TO THE APPLIANCE, MAKE PREWASH WITH COLD OR WARM WATER WITHOUT USING ANY DETERGENT.
- TURN ON THE WATER SOURCE VALVE AND PLUG IN THE APPLIANCE.
- IN ORDER TO TAKE OFF ANY RESIDUE THAT REMAIN IN STORAGE OR PIPES, OPERATE THE APPLIANCE WHEN IT IS EMPTY.
- TURN THE DISHWASHER ON AS SOON AS THE OPERATOR STARTS IN THE MORNING ENSURING THAT THERE IS ENOUGH TIME FOR THE WATER TO HEAT, DEPENDING ON THE MODEL THE WATER TANK COULD TAKE UPTO 45-50 MINUTES TO HEAT COMPLETELY.
- TURN THE SWITCH TO THE RIGHT AND TTTO THE 'WATER INLET' POSITION.
- WHEN THE APPLIANCE IS AT 'WATER INLET' POSITION, THE WATER WILL NOW START TO FILL, WHEN THE TANK IS FULL THE WATER WILL START TO HEAT. AFTER HEATING PROCESS 'READY LAMP' SIGNALS.
- OPEN TOP LOADING HOOD AND PUT ENOUGH DETERGENT INTO THE WATER TANK, OR IF THE DETERGENT PUMP IS FITTED ENSURE THAT THE DETERGENT PUMP IS CONNECTED TO THE DETERGENT RESERVOIR.
- PUSH THE BASKET OF PRE WASHER INTO THE WASH POSITION INSIDE THE DISHWASHER. NOW CHOOSE SUITABLE WASHING PROGRAM. THERE ARE 4 OPTIONS OF THE WASH CYCLE TIME.
- WASHING PROCESS; FOR HOT WATER AND WASHING WITH DETERGENT (MINIMUM 55°C), FOR RINSING WITH HOT WATER (MINIMUM 75°C).
- AFTER WASHING PROCESS, THE APPLIANCE WILL START RINSING PROCESS AUTOMATICALLY. (DO NOT OPEN THE LID BEFORE RINSING PROCESS ENDED).
- AT THE END OF PROGRAM OPEN THE LID AND TAKE OUT THE WASHED BASKET. PLACE ANOTHER PREPARED BASKET INTO THE DISHWASHER.
- NOW REPEAT THE PROCESS, ENSURING THAT THE 'READY LAMP' SIGNALS BEFORE STARTING A NEW CYCLE. THE MACHINE WILL NOW REPEAT THE WASHING AND RINSING PROCESSES AT THE CHOOSEN WASH CYCLE.

E. CLEANING & MAINTENANCE

CLEANING AND MAINTENANCE AFTER EVERY USE

- ECATERING RECOMMEND THAT THE WASHER IS CLEANED DAILY
- DRAIN THE WATER BY REMOVING THE TRAY AND LOCATE THE ROUND PLUG JUST SHOWING OUT OF THE WATER. PHYSICALLY LIFT AND REMOVE IT. ONCE REMOVED DRAIN THE WATER BY TURNING THE SWITCH TO THE 'F' POSITION.
- ALWAYS ISOLATE THE ELCTRICAL SUPPLY TO THE APPLIANCE AND DISCONNECT FROM THE POWER SUPPLY BEFORE CLEANING.
- NOW THE TANK IS EMPTY, REMOVE ANY RETAINED DEBRIS AND CLEAN THE TANK WITH CLEAN SOAPY WATER.
- CLEAN ALL SURFACES OF THE APPLIANCE WITH HOT SOAPY WATER. RINSE AND DRY WITH A DAMP CLOTH.
- CLEAN THE CONTROL PANEL WITH SOFT DAMP CLOTH, IF NECESSARY USE A LIGHT DETERENT.
- DO NOT USE ABRASIVE CLEANING CHEMICALS AS THESE CAN LEAVE HARMFUL RESIDUES.
- DO NOT CLEAN THE APPLIANCE BY SPRAYING WATER DIRECTLY, OTHERWISE ELECTRIC MOTOR MAY GET DAMAGED.

PERIODIC CLEANING AND MAINTENANCE

- ALL MAINTENANCE SHOULD BE CARRIED OUT BY A QUALIFIED PERSON.
- CLEAN ANY LIME RESIDUE FROM THE BURNER, INNER SURFACE OF THE WASHING TANK AND WATER PIPES ONCE OR TWICE IN A YEAR.
- **IF LIME IS FOUND REGULARY THEN YOU SHOULD BE USING A WATER SOFTENER. PERSISTENT LIME WILL DAMAGE THE WASHER. CLEAN THE LIME WITH USING RINSING AND WASHING NOZZLES ONCE IN A MONTH BY USING VINEGAR OR LIME REMOVER. BE SURE TO WEAR APPROPRIATE PPE (GLOVES AND PROTECTIVE GLASSES)**
- CLEAN THE FILTERS IN THE APPLIANCE ONCE IN A WEEK. AFTER CLEANING BE SURE THAT THE FILTERS ARE SECURED BACK IN POSITION.
- CLEAN THE APPLIANCE'S FOUNTAINS ONCE IN 15 DAYS BY DETACHING IT.
- CLEAN THE APPLIANCE'S DRAINAGE PLUG AND DRAINAGE HOSES ONCE IN 15 DAYS.

F. TROUBLESHOOTING

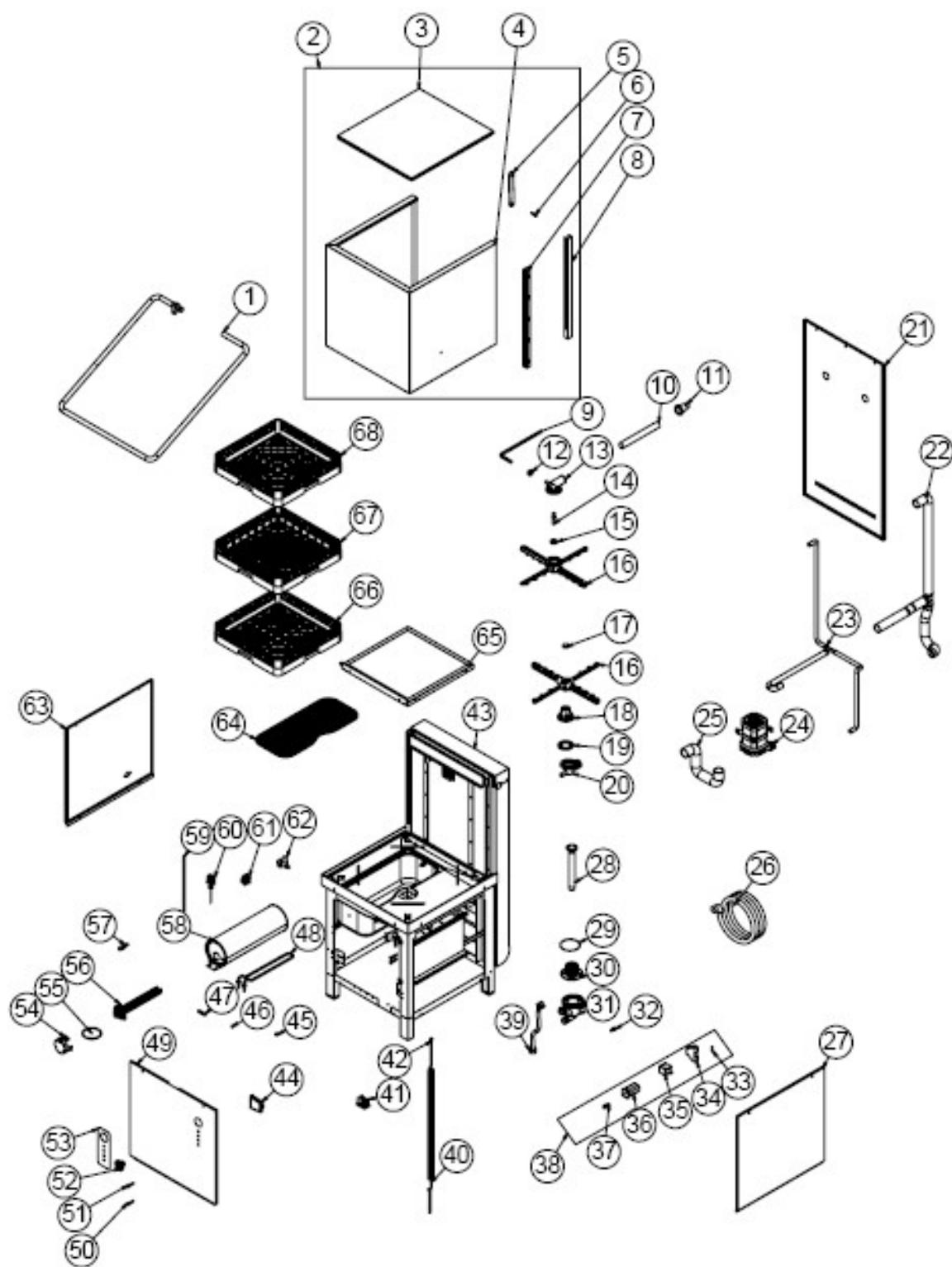
DISHES ARE NOT WASHED WELL	<ul style="list-style-type: none"> - CLEAN THE PULLING FILTER IF IT IS DIRTY. - CHECK THE FOUNTAINS IF THEY ARE ACCUMULATED WITH RESIDUES OR NOT. - CHECK THE AMOUNT OF DETERGENT. - IF THE CHOSEN WASHING PROGRAM IS TOO LESS, REPEAT THE PROGRAM. - PAY ATTENTION THE STORAGE HEAT TO BE 55°C - 65°C. - BE SURE THAT THE DISHES ARE PLACED CORRECTLY ON BASKETS. - CHECK THE AMOUNT OF POLISHER. CHECK THAT IF THERE IS POLISHER OR NOT IF NECESSARY ADD SOME. - CHECK THE SETTINGS FOR THE AMOUNT OF POLISHER. - PAY ATTENTION THE WATER HEAT TO BE 70°C.
MIST-OVER ON CUPS	<ul style="list-style-type: none"> - IF THERE ISN'T POLISHER, ADD SOME. - CHECK THE AMOUNT OF POLISHER. - TAKE OFF THE CUP BASKET AFTER WASHING PROCESS ENDED.
STAINS ON CUP	<ul style="list-style-type: none"> - ONLY USE PRODUCTS THAT ARE NOT FOAMING FOR THE PROFESSIONAL DISHWASHERS.
MUCH FOAM AT STORAGE	<ul style="list-style-type: none"> - PAY ATTENTION THE WASHING WATER NOT TO BE LESS THAN 50°C. - CHECK THE AMOUNT OF DETERGENT . - IF FOAMING DETERGENT IS USED, POUR IT AND RINSE THE STORAGE TILL THE FOAMS ARE LOST.
WASHING OR RINSING HANDLES ARE TURNING SLOWLY	<ul style="list-style-type: none"> - TAKE OFF WASHING HANDLES AND CLEAN THEM. - CLEAN THE WASHING PUMP ABSORBING FILTER
VISCIDITY ON CUPS	<ul style="list-style-type: none"> - REDUCE THE AMOUNT OF POLISHER.

- IF DISHWASHING IS NOT DONE AT SUITABLE QUALITY
- IF ANY FUNCTION OF SECURITY DOESN'T WORK
 - > DO NOT USE THE APPLIANCE.

G. FREQUENTLY ASKED QUESTIONS

HOW OFTEN DO I CHANGE THE WATER?	THERE IS NO EXACT ANSWER, IT DEPENDS ON HOW BUSY YOU ARE. YOU MAY NEED TO DO ONCE OR TWICE IN A SHIFT OR EVEN ZERO, JUST LOOK OUT FOR POTS/GLASSES COMING OUT THAT ARE NOT BEING WASHED AS WELL AS THEY WERE. YOU DO NOT NEED TO CHANGE THE WATER AFTER EVERY WASH.
WHY IS THERE SO MUCH FOAM?	IF YOU RUN THE DISHWASHER WHEN B IS NOT ILLUMINATED THE CHEMICALS WILL NOT WORK AS INTENDED AND CAUSE THE UNIT TO FOAM. YOU WILL NEED TO DRAIN THE UNIT AND GIVE IT A RINSE OUT AND REFILL IF THAT HAPPENS.
DO I NEED TO ADD SALT?	THIS UNIT DOES NOT INCLUDE A WATER SOFTENER BUILT IN. IF YOU ARE IN A HARD WATER AREA IT IS ESSENTIAL YOU GET AN EXTERNAL WATER SOFTNER.
DOES IT ALWAYS TAKE SO LONG TO HEAT UP?	THE AVERAGE TIMES GIVEN ARE BASED ON THE UNIT HAVING A COLD WATER FEED AND RUNNING ON A I3A PLUG. YOU CAN USE A WARM WATER FEED TO REDUCE TIMES BUT YOU WILL NEED A WATER SOFTENER REGARDLESS IF YOUR AREA IS A HARD WATER AREA OR NOT.

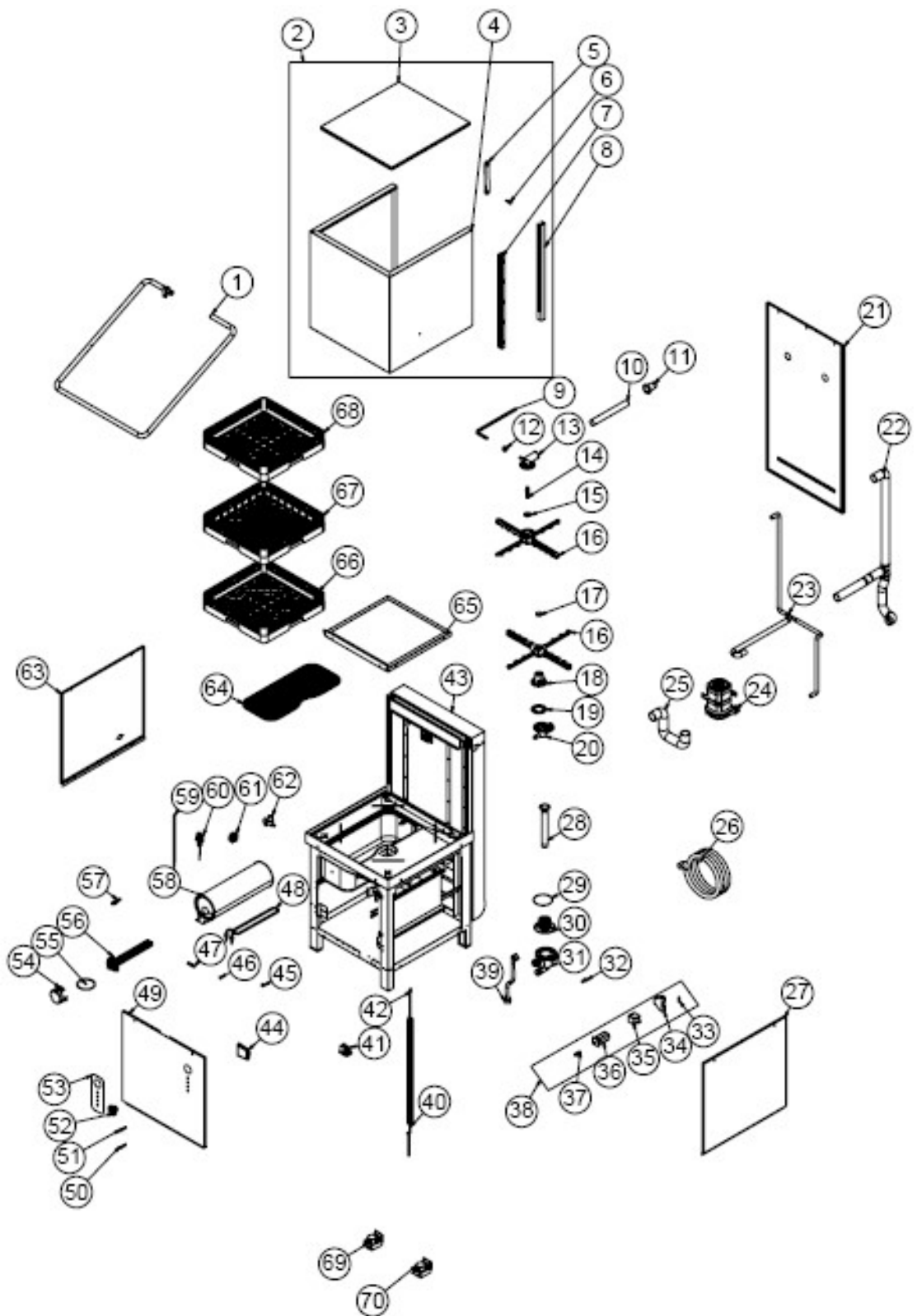
H. SPARE PART LIST-EXPLODING DRAWING



DMH016

PRODUCT CODE: DMH016		
NO	PRODUCT NAME	P.CODE
1	PIPE	YBR-ERS.BYM-KS-0026
2	COVER	ARA-ERS.BYM-0015
3	COVER TOP SHEET	YSC-ERS.BYM-PN-0249
4	TOP COVER SHEET	YSC-ERS.BYM-PN-0250
5	MOTION ARM PLASTIC	M.ENJ-ERS-PLS-BYM-098
6	CONNECTION SCREW	YTL-ERS.BYM-KS-0069
7	TOP COVER SLIDE	M.ENJ-ERS-PLS-BYM-075
8	SLIDE SHEET	M.MTS-ERS-BYM-009
9	RINSE PIPE	YBR-ERS.BYM-KS-0021
10	UPPER SPRAY PIPE	YBR-ERS.BYM-KS-0022
11	WEDGE LOCATION	M.ENJ-ERS-PLS-BYM-011
12	CONEXION NUT	YTL-ERS.BYM-KS-0030
13	HOSE UPPER ELBOW	M.ENJ-ERS-PLS-BYM-021
14	SPINNING SPINDLE	YTL-ERS.BYM-KS-0001
15	PRESSURE PLASTIC	M.ENJ-ERS-PLS-BYM-059
16	FOUNTAIN	M.ENJ-ERS-PLS-BYM-053
17	SPRAY SCREW	M.ENJ-ERS-PLS-BYM-070
18	LOWER FOUNTAIN CENTER	M.ENJ-ERS-PLS-BYM-027
19	SPRAY GASKET	M.ENJ-ERS-LST-019
20	HOSE LOWER ELBOW	M.ENJ-ERS-PLS-BYM-096
21	BACK COVER SHEET	YSC-ERS.BYM-PN-0230
22	WASHING HOSE	ERS.M.MEK-TES-HRT-009
23	SPRAY DISTRIBUTION HOSE	M.MEK-TES-HRT-039
24	WASHING MOTOR	M.ELK-MTR-PMP-001
25	ENGINE BOILER CONNECTION HOSE	M.MEK-TES-HRT-080
26	WASTE WATER HOSE	M.MEK-TES-HRT-034
27	RIGHT SIDE SHEET	YSC-ERS.BYM-PN-0244
28	DRAIN WEDGE	M.ENJ-ERS-PLS-BYM-115
29	GASKET	M.CNT-ERS-031
30	FILTER COVER	M.ENJ-ERS-PLS-BYM-086
31	FILTER BODY+AIR TRAP	M.ENJ-ERS-PLS-BYM-088
32	DETERGENT ENTRY PLASTIC	M.PLS-ERS-036

33	GLASS FUSE 5A	M.ELK-SGR-011
34	WASH TIME RELAY	M.ELK-KNT-ROL-020
35	LC1K0901M7 CONTACTOR	ERS.M.ELK-KNT-KNT-020
36	SWITCH	M.ELK-SLT-PKO-014
37	HORIZONTAL SENSOR	M.ELK-SWC-KTG-005
38	ELECTRICAL PANEL GROUP	M.ELK-PNO-BYM-002
39	HOSE 150CM	ERS.M.MEK-TES-HRT-011
40	TOP COVER SPRING	M.YAY-ERS-041
41	ROLLER FOOT	ERS.M.AKS-AYK-PLS-005
42	SPRING STRING	ERS.M.MUH-042
43	CHASSIS	-
44	AIR TRAP	M.ENJ-ERS-PLS-BYM-019
45	MAGNET	M.MIK-ERS-002
46	ORING	M.CNT-ORG-002
47	INLET PIPE	YBR-ERS.BYM-KS-0001
48	TANK RESISTANCE 230V-2500W	M.ELK-RZS-BRU-BYM-028
49	FRONT SHEET	YSC-ERS.BYM-PN-0245
50	GREEN WARNING LAMP	ERS.M.ELK-LMB-SNY-001
51	YELLOW WARNING LAMP	ERS.M.ELK-LMB-SNY-003
52	SWITCH BUTTON	M.AKS-DGM-MUH-002
53	PANEL LABEL	M.AKS-ETK-LKS-ERS-BYM-003
54	RESISTANCE COVER	M.ENJ-ERS-PLS-BYM-028
55	ORING	M.CNT-ORG-012
56	BOILER RESISTANCE 380V-6000W	M.ELK-RZS-BRU-BYM-029
57	ARM CONNECTION	YTL-ERS.BYM-KS-0028
58	BOILER TANK	M.MEK-TES-BYM-BYL-002
59	PROCESTAT HOSE	HTS-HRT-008
60	THERMOSTAT 0-90°C	M.ELK-MEK-TRM1-008
61	PROCESTAT FLOAT	M.ELK-MUH-001
62	VALVE (14 LT)	M.ELK-SLN-PLS-001
63	LEFT SIDE SHEET	YSC-ERS.BYM-PN-0243
64	FILTER PLASTIC	M.ENJ-ERS-PLS-BYM-116
65	TABLE BODY SHEET	YSC-ERS.BYM-LZ-0307
66	PLATE BASKET	EMP.TB.01
67	GLASS BASKET	EMP.BB.01
68	SPOON FORK BASKET	EMP.KC.01

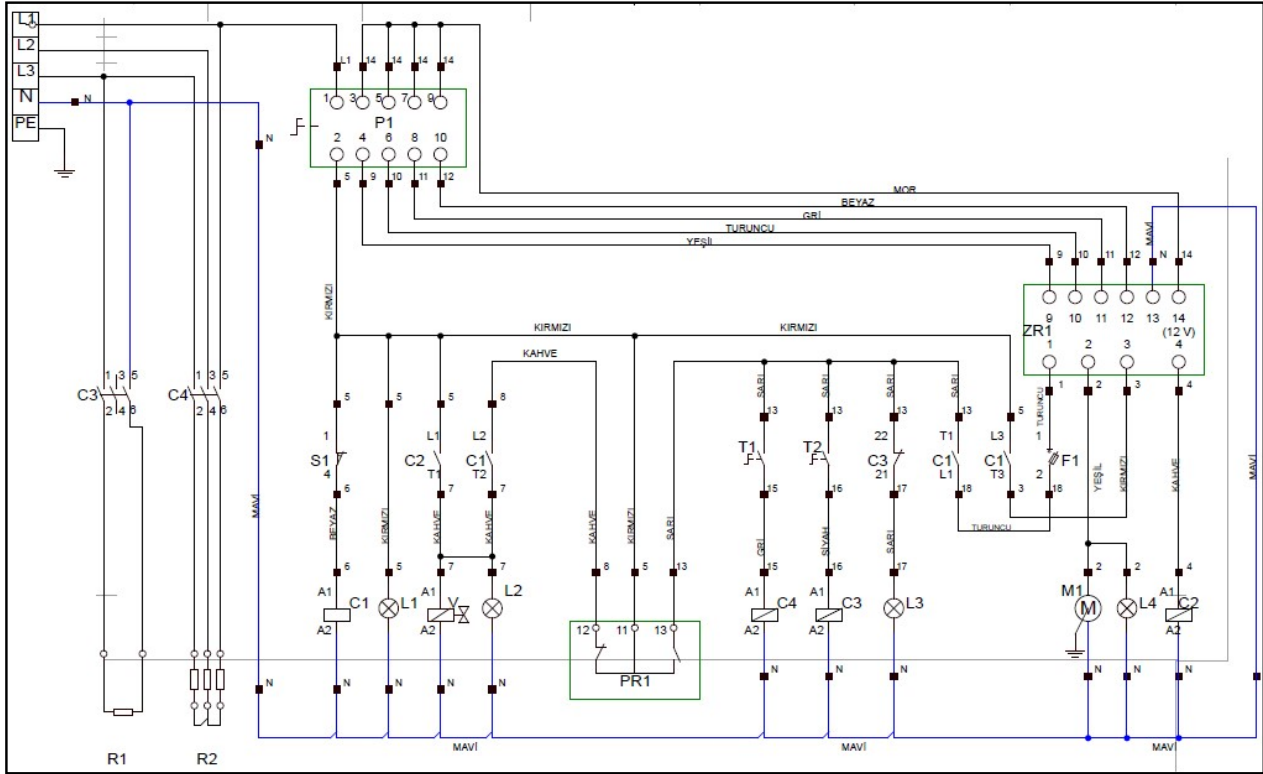


DMH017

PRODUCT CODE: DMH017		
NO	PRODUCT NAME	P.CODE
1	PIPE	YBR-ERS.BYM-KS-0026
2	COVER	ARA-ERS.BYM-0015
3	COVER TOP SHEET	YSC-ERS.BYM-PN-0249
4	TOP COVER SHEET	YSC-ERS.BYM-PN-0250
5	MOTION ARM PLASTIC	M.ENJ-ERS-PLS-BYM-098
6	CONNECTION SCREW	YTL-ERS.BYM-KS-0069
7	TOP COVER SLIDE	M.ENJ-ERS-PLS-BYM-075
8	SLIDE SHEET	M.MTS-ERS-BYM-009
9	RINSE PIPE	YBR-ERS.BYM-KS-0021
10	UPPER SPRAY PIPE	YBR-ERS.BYM-KS-0022
11	WEDGE LOCATION	M.ENJ-ERS-PLS-BYM-011
12	CONEXION NUT	YTL-ERS.BYM-KS-0030
13	HOSE UPPER ELBOW	M.ENJ-ERS-PLS-BYM-021
14	SPINNING SPINDLE	YTL-ERS.BYM-KS-0001
15	PRESSURE PLASTIC	M.ENJ-ERS-PLS-BYM-059
16	FOUNTAIN	M.ENJ-ERS-PLS-BYM-053
17	SPRAY SCREW	M.ENJ-ERS-PLS-BYM-070
18	LOWER FOUNTAIN CENTER	M.ENJ-ERS-PLS-BYM-027
19	SPRAY GASKET	M.ENJ-ERS-LST-019
20	HOSE LOWER ELBOW	M.ENJ-ERS-PLS-BYM-096
21	BACK COVER SHEET	YSC-ERS.BYM-PN-0230
22	WASHING HOSE	ERS.M.MEK-TES-HRT-009
23	SPRAY DISTRIBUTION HOSE	M.MEK-TES-HRT-039
24	WASHING MOTOR	M.ELK-MTR-PMP-001
25	ENGINE BOILER CONNECTION HOSE	M.MEK-TES-HRT-080
26	WASTE WATER HOSE	M.MEK-TES-HRT-034
27	RIGHT SIDE SHEET	YSC-ERS.BYM-PN-0244
28	DRAIN WEDGE	M.ENJ-ERS-PLS-BYM-115
29	GASKET	M.CNT-ERS-031
30	FILTER COVER	M.ENJ-ERS-PLS-BYM-086
31	FILTER BODY+AIR TRAP	M.ENJ-ERS-PLS-BYM-088
32	DETERGENT ENTRY PLASTIC	M.PLS-ERS-036
33	GLASS FUSE 5A	M.ELK-SGR-011

34	WASH TIME RELAY	M.ELK-KNT-ROL-020
35	LC1K0901M7 CONTACTOR	ERS.M.ELK-KNT-KNT-020
36	SWITCH	M.ELK-SLT-PKO-014
37	HORIZONTAL SENSOR	M.ELK-SWC-KTG-005
38	ELECTRICAL PANEL GROUP	M.ELK-PNO-BYM-002
39	HOSE 150CM	ERS.M.MEK-TES-HRT-011
40	TOP COVER SPRING	M.YAY-ERS-041
41	ROLLER FOOT	ERS.M.AKS-AYK-PLS-005
42	SPRING STRING	ERS.M.MUH-042
43	CHASSIS	-
44	AIR TRAP	M.ENJ-ERS-PLS-BYM-019
45	MAGNET	M.MIK-ERS-002
46	ORING	M.CNT-ORG-002
47	INLET PIPE	YBR-ERS.BYM-KS-0001
48	TANK RESISTANCE 230V-2500W	M.ELK-RZS-BRU-BYM-028
49	FRONT SHEET	YSC-ERS.BYM-PN-0245
50	GREEN WARNING LAMP	ERS.M.ELK-LMB-SNY-001
51	YELLOW WARNING LAMP	ERS.M.ELK-LMB-SNY-003
52	SWITCH BUTTON	M.AKS-DGM-MUH-002
53	PANEL LABEL	M.AKS-ETK-LKS-ERS-BYM-003
54	RESISTANCE COVER	M.ENJ-ERS-PLS-BYM-028
55	ORING	M.CNT-ORG-012
56	BOILER RESISTANCE 380V-6000W	M.ELK-RZS-BRU-BYM-029
57	ARM CONNECTION	YTL-ERS.BYM-KS-0028
58	BOILER TANK	M.MEK-TES-BYM-BYL-002
59	PROCESTAT HOSE	HTS-HRT-008
60	THERMOSTAT 0-90°C	M.ELK-MEK-TRM1-008
61	PROCESTAT FLOAT	M.ELK-MUH-001
62	VALVE (14 LT)	M.ELK-SLN-PLS-001
63	LEFT SIDE SHEET	YSC-ERS.BYM-PN-0243
64	FILTER PLASTIC	M.ENJ-ERS-PLS-BYM-116
65	TABLE BODY SHEET	YSC-ERS.BYM-LZ-0307
66	PLATE BASKET	EMP.TB.01
67	GLASS BASKET	EMP.BB.01
68	SPOON FORK BASKET	EMP.KC.01
69	DETERGENT PUMP	M.ELK-MTR-PMP-006
70	POLISHING PUMP	M.ELK-MTR-PMP-007

I. ELECTRIC CIRCUIT SCHEMA



P1	S1	C1	C2	C3	C4	T1	ZR1	T2
5 Progressive Commutator	Magnetic Door Sensor	Boiler Contactor 230V	Washing Contactor 230V	Lid Relay 230V	Washinh Relay 230V	Boiler Thermostat (30-90°C)	5 Cycle-cycle Relay (İNTER RR-5TG)	Washing Thermostat (30-90°C)

L1	L2	L3	L4	PR1	M1	R1	R2	F1	V
Start lamp	Rinsing lamp	Water is heated lamp	Washing lamp	Prossestat	Washing Motor 0,55 KW 230V	Washing Resistance 2500W 230V	Boiler Resistance 3x2000W 380V	ZR1 Fuse 500mA	Selenoid valve 230V




DMHO16 · CONTENDER PASS THROUGH HOOD DISHWASHER - SINGLE PHASE

DMHO17 · CONTENDER PASS THROUGH HOOD DISHWASHER - THREE PHASE



STEP UP TO THE PLATE

Distributed by RG Distributors Ltd T/A Ecatering | Unit 7 Jade Business Park | Spring Road | Seaham | SR7 9DR

 **0333 358 3678**

 **sales@ecatering.co.uk**

 **www.ecatering.co.uk**